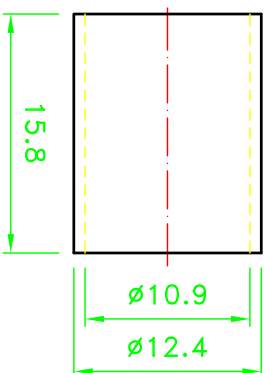
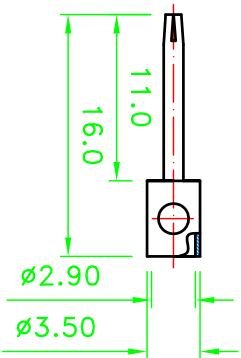
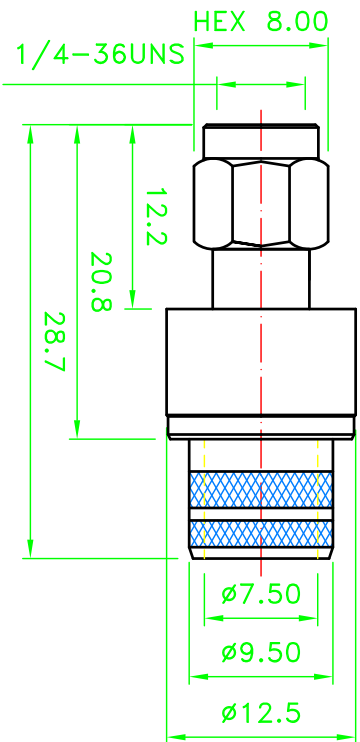




REV	DESCRIPTION	DRAWN	DATE



NO	Description	Qty	Material	Finish
7	C-RING	1	BE BRONZE	NONE
6	SHELL	1	BRASS	NICKEL
5	GASKET	1	SILICONE	NONE
4	INSULATOR	1	TEFLON	NONE
3	FERRULE	1	BRASS	NICKEL
2	PIN	1	BE BRONZE	GOLD
1	BODY	1	BRASS	NICKEL

R&D			
			
* MAJOR DIMENSION			
UNLESS OTHERWISE NOTED TOLERANCES			
0.5-6=±0.2			
6-30=±0.4			
30-120=±0.6			
120-315=±1.0			
ANGLES=±1°			
SCALE	4/1	UNIT	MM
APPROVED		DRAWN DATE 08/09/19	
CASH		DRAWN	
CHECKED		PEN	
LYDIA		PEN	
			
華城電子有限公司 RF CASTLE ELECTRONICS CO., LTD			
TITLE			
RP SMA MALE CRIMP			
DRAWING NO.			
SMA-1001-2-RP-B4-TGN			
REV			LY
			A